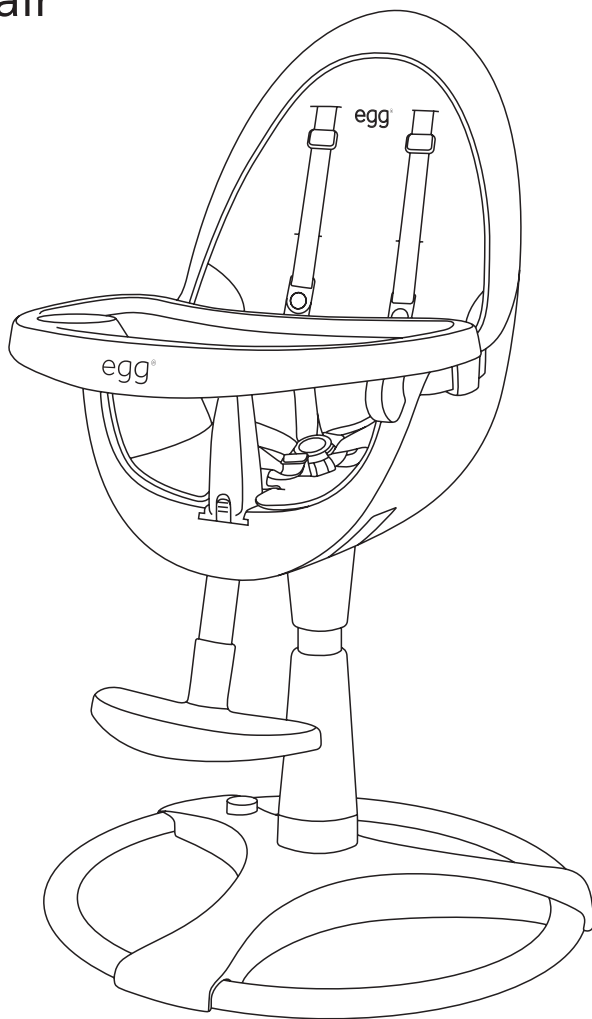


egg[®]

highchair



INSTRUCTION MANUAL

SCAN TO REGISTER
YOUR WARRANTY



CONTENTS

- 4 Important information and warnings
- 6 What's in the box
- 7 Highchair overview
- 8 Fitting and removing the centre support to the base
- 9 Fitting and removing the chair
- 10 Fitting and removing the footrest
- 10 Fitting and removing the anti-slip post
- 11 Fitting and removing the main tray
- 11 Fitting and removing the upper tray

OPERATIONAL INSTRUCTIONS

- 12 Releasing and connecting the 5-point magnetic buckle
- 14 Adjusting the 5-point harness
- 15 Adjusting the main tray
- 15 Adjusting the footrest
- 16 Adjusting the chair height
- 17 Reclining the chair
- 18 Rotating the chair
- 19 Moving wheels

- 20 Care and maintenance
- 21 Warranty policy
- 22 Warranty terms

IMPORTANT! READ CAREFULLY AND KEEP FOR FUTURE REFERENCE.

Your child's safety may be affected if you do not follow these instructions.

- The highchair must be assembled, adjusted and disassembled only by an adult.
- Use only spare parts delivered by manufacturer for replacing parts or repairs.
- Damage caused by overloading or incorrect use or neglect are not covered by the warranty.
- Prolonged exposure to sunshine may cause changes in the colour of materials and fabrics.
- Do not expose this product to extreme temperatures. Extreme sunshine or temperatures may cause colour changes or bent parts.



WARNING:

- Do not use this product without reading the instructions first.
- Do not use the highchair until the child can sit up unaided.
- This highchair is not recommended for a child under 6 months old.
- The weight of the child using this highchair should not exceed 15kg and up to 36 months.
- Never leave the child unattended.
- Be aware of the risk of tilting when your child can push its feet against a table or other structure.
- Always use the restraint system.
- Always use the crotch belt when using the chair in highchair mode, to prevent them from sliding out. Make sure the harness is properly adjusted.

- Never use the product on an elevated surface e.g. table, counter, near steps or on other elevated surface.
- Always use the product on the floor.
- Falling hazard - prevent your child from climbing on the product.
- Be aware of the risk of open fire and other sources of strong heat, such as electric bar fires, gas fires etc. in the near vicinity of the product.
- All assembly fittings should be tightened properly; care should be taken that no screws or parts are loose.
- Young children should not be allowed to play unsupervised in the vicinity of this product.
- Do not use the product unless all components are correctly fitted and adjusted.

IMPORTANT:

- Adult assembly required.
- Care should be taken in unpacking and assembly.
- Examine highchair frequently for damage, missing or loose parts.
- Do not use if any parts are missing or damaged.
- If parts are missing or broken, please contact the store where you bought the product, before using.
- Note: The fabric patterns, images and accessories on this product in this instruction manual may vary from the product you have purchased.

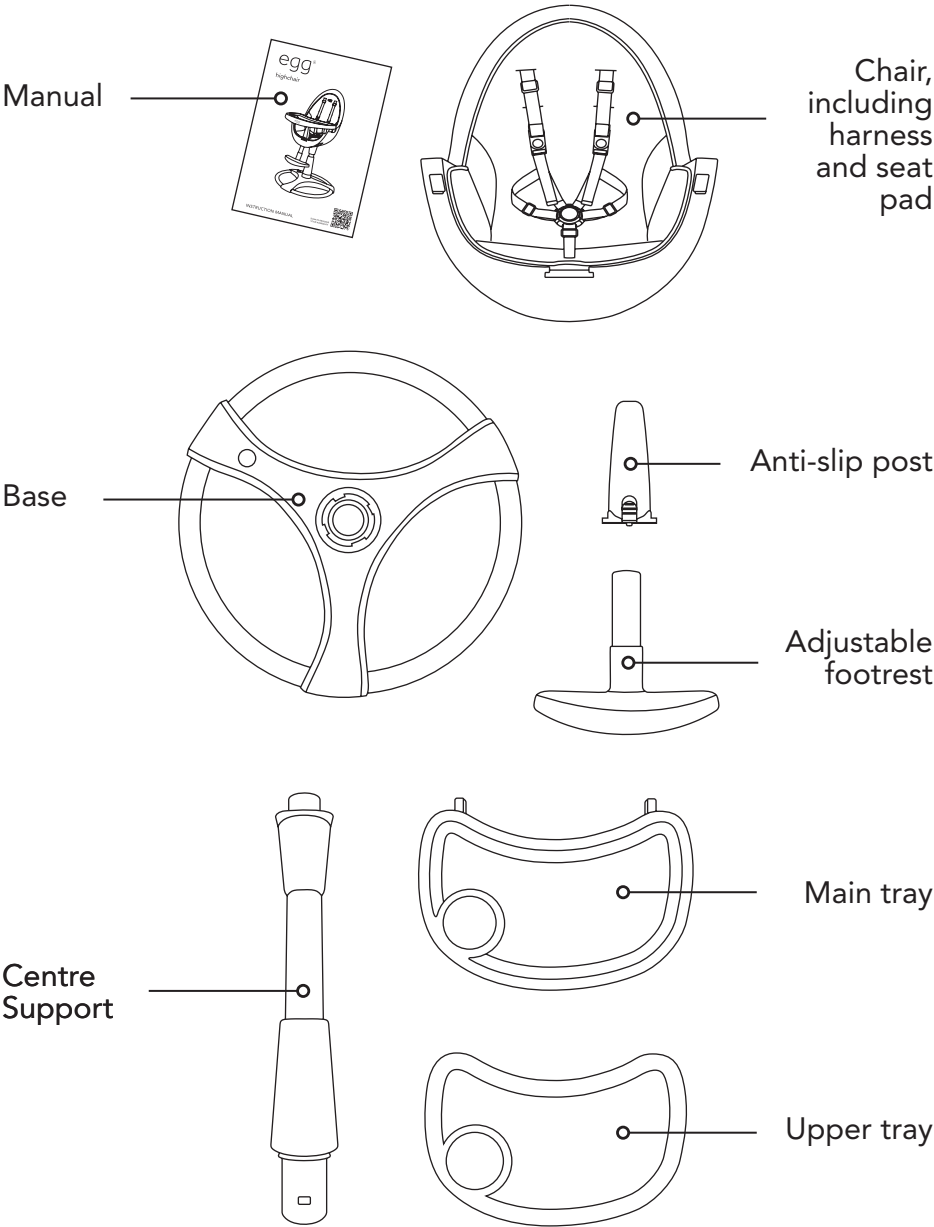


WARNING:

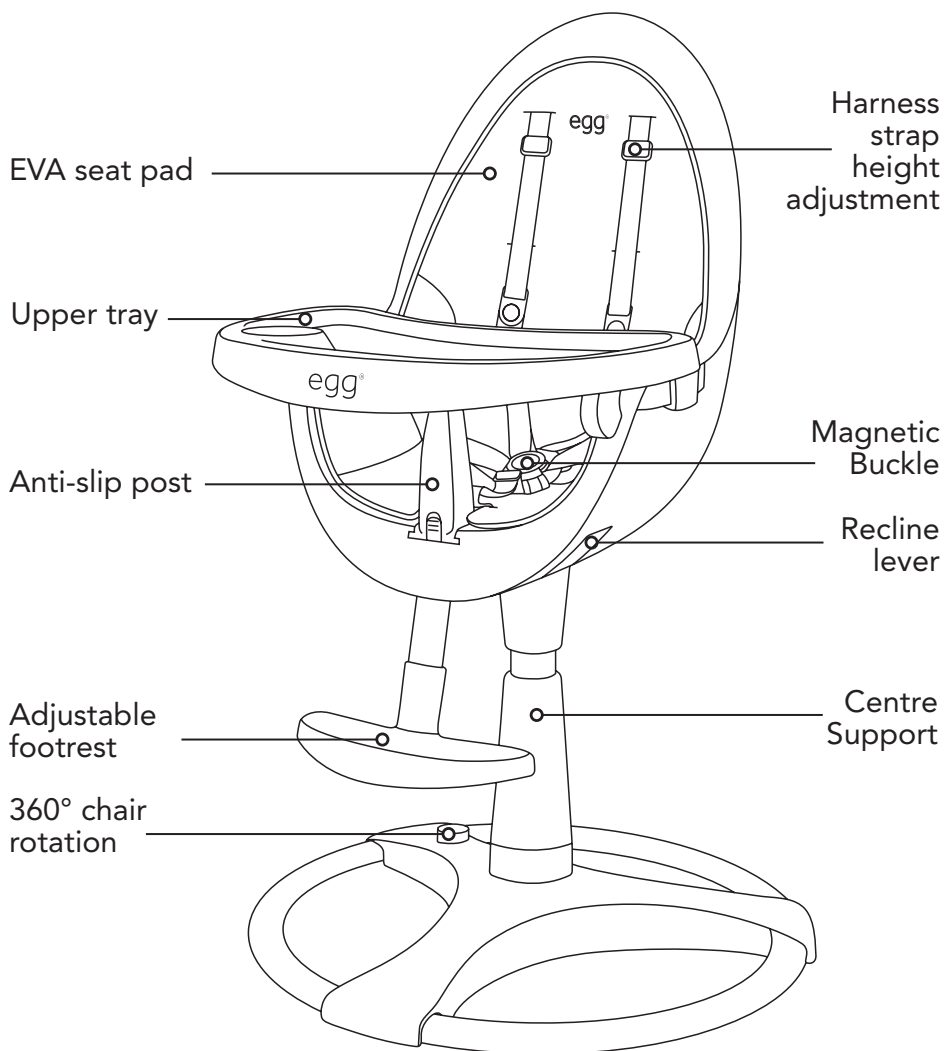
Please keep all packaging material away from babies and children, to prevent suffocation.

Manufactured and tested in compliance with
EN14988:2017 + A2:2024

WHAT'S IN THE BOX



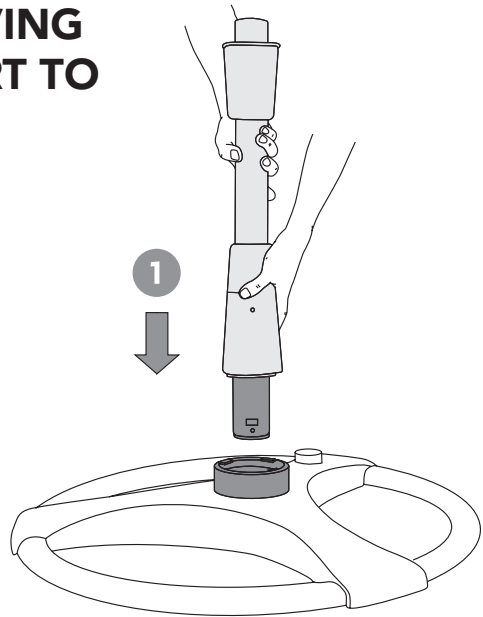
HIGHCHAIR OVERVIEW



The illustrations in this manual are used to demonstrate the operation of the product. Where there are small differences between the physical object and the illustrations, the physical highchair shall prevail.

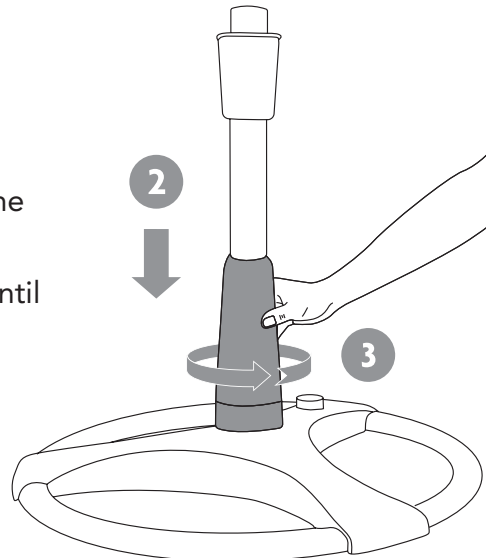
FITTING AND REMOVING THE CENTRE SUPPORT TO THE BASE

Insert the lower end of the
centre support into the base (1)



Push the sleeve down to meet the
base (2).

Twist the sleeve anti-clockwise until
it locks in place with a click (3).

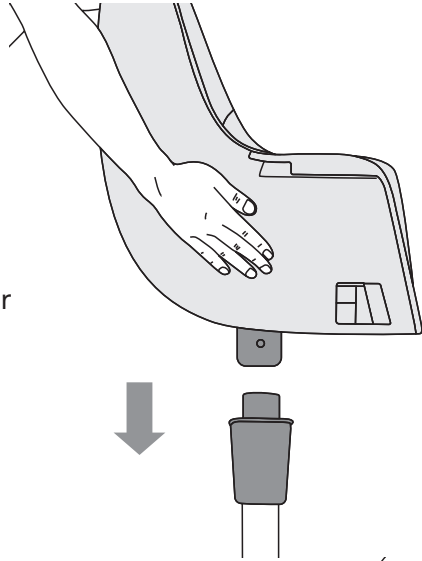


To remove the the centre support from the base, pull up on the
release button on the sleeve, twist the sleeve clockwise then lift the
sleeve from the base.

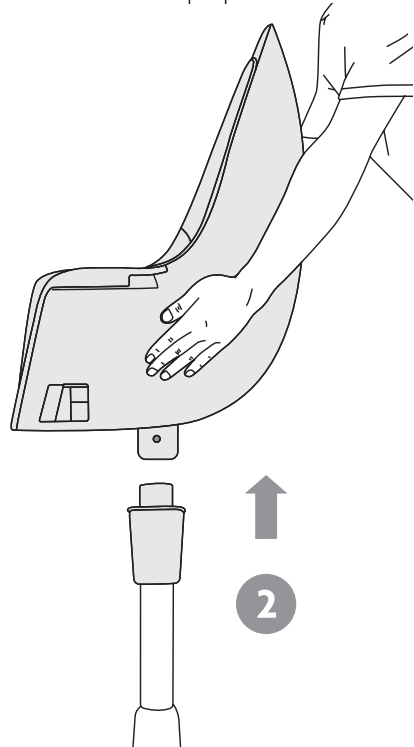
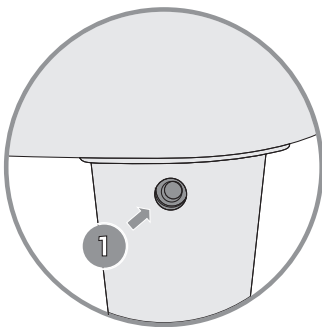
The centre support can now be lifted from the base.

FITTING AND REMOVING THE CHAIR

Hold the chair with both hands as shown in the diagram, lower the chair onto the top of the centre support until you hear a click, your chair is now secure.

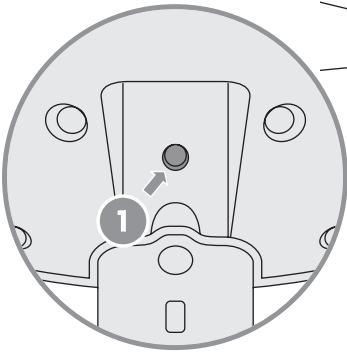
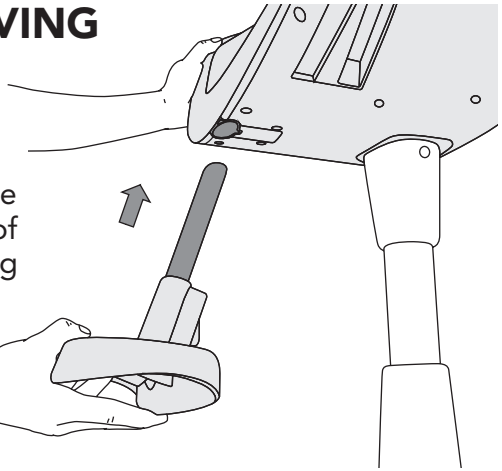


To remove the chair, locate the release pin (1), press the pin and lift the the chair until it detaches from the centre support (2).



FITTING AND REMOVING THE FOOTREST

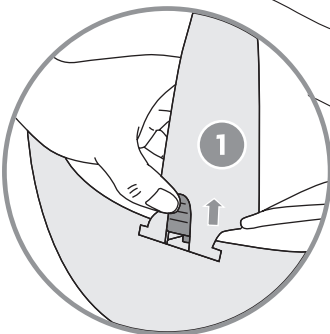
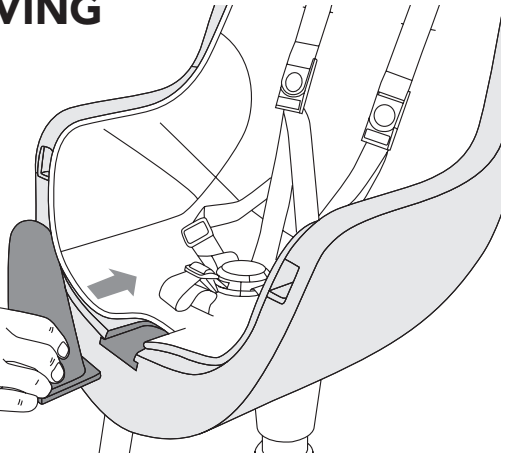
Hold the chair steady with one hand, insert the footrest into the opening under the front edge of the chair, push in until the spring loaded pin clicks in place.



To remove the footrest, locate the release pin (1), press the pin and pull the footrest until it detaches from the chair (2).

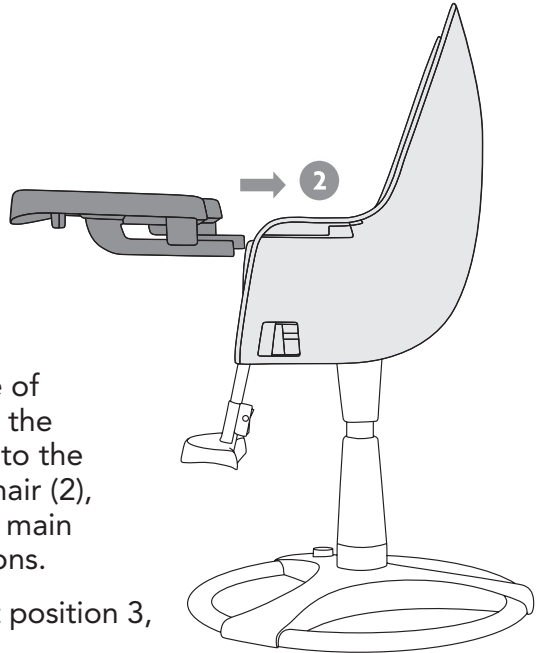
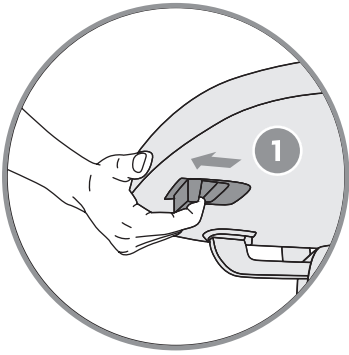
FITTING AND REMOVING THE ANTI-SLIP POST

Slide the anti-slip post into the slot at the front of the chair until it clicks in place.



To remove the anti-slip post, press upwards on the button on the front of the post (1), then slide the post out of the slot.

FITTING AND REMOVING THE MAIN TRAY



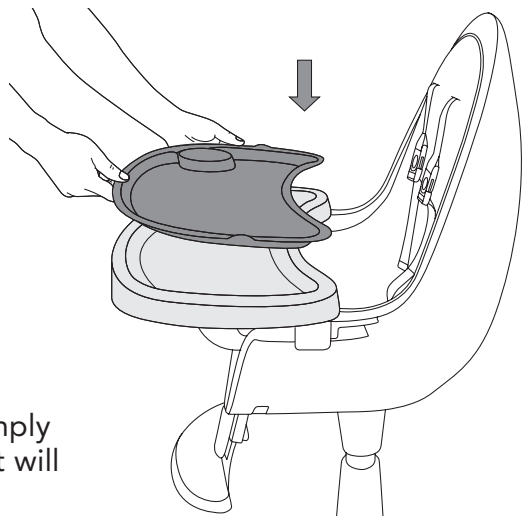
Pull the lever on the underside of the tray (1) towards you, insert the rails on each side of the tray into the two holes at the front of the chair (2), push until you hear a click, the main tray can now be set to 3 positions.

NOTE: if the tray is pulled past position 3, it will detach from the chair.

To remove the main tray, pull the lever under the front of the tray (1), pull the tray until it detaches from the chair (2).

FITTING AND REMOVING THE UPPER TRAY

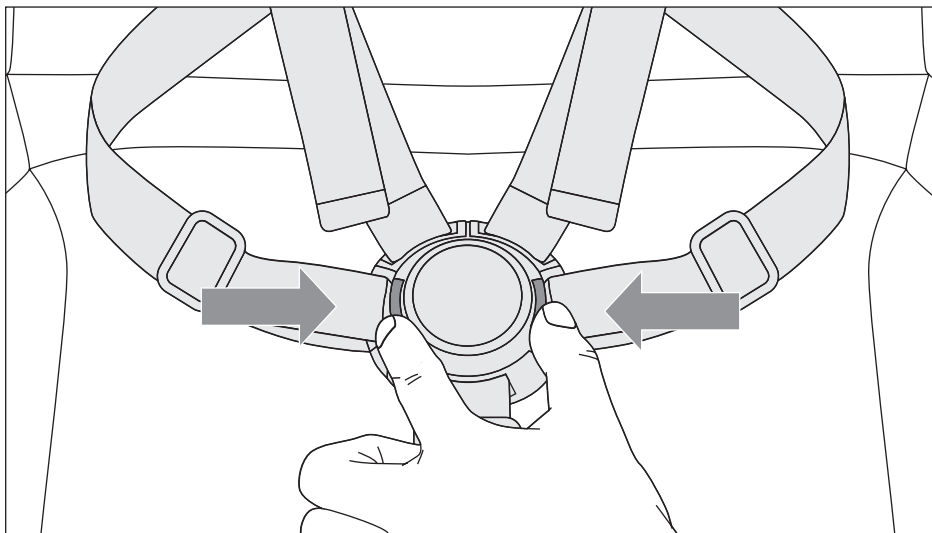
To fit the upper tray to the main tray, simply press down on the tray to secure in place.



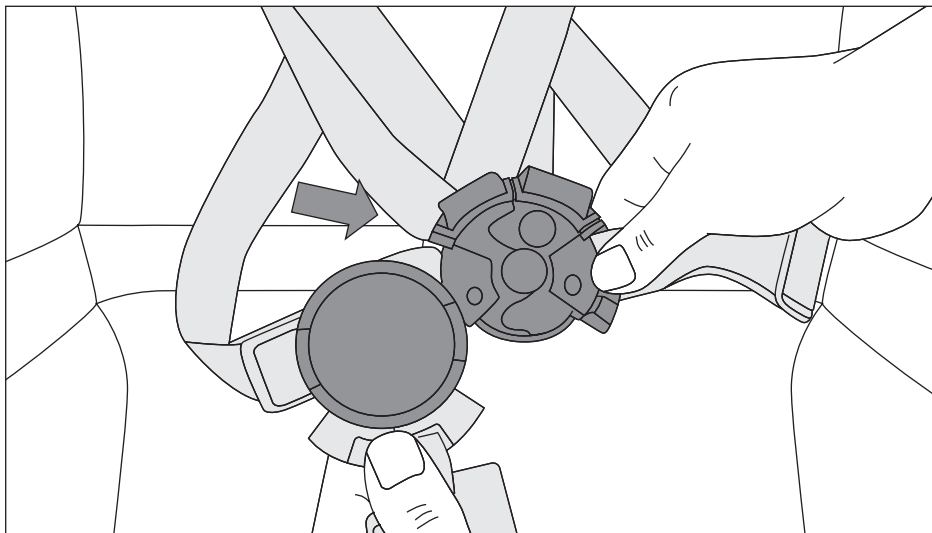
To remove the upper tray, simply lift the edge of the tray and it will detach from the main tray.

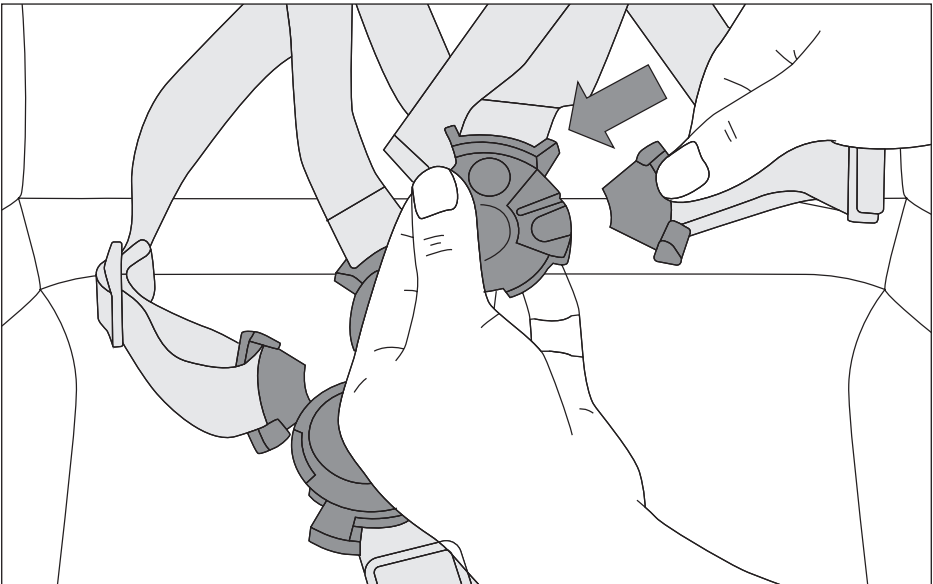
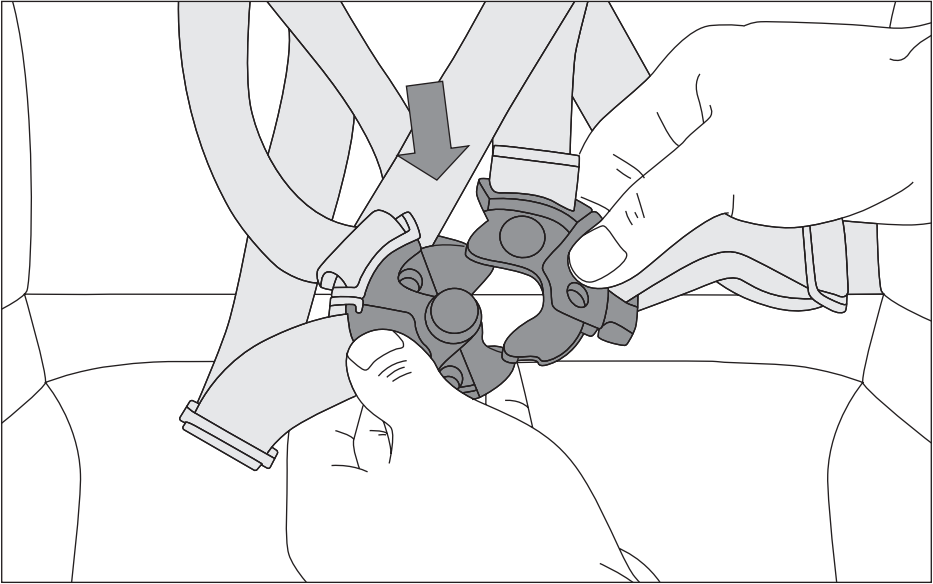
OPERATIONAL INSTRUCTIONS

RELEASING AND CONNECTING THE 5-POINT MAGNETIC BUCKLE



To open the 5-point magnetic buckle, firmly press the buttons on both sides, the front cap and crotch strap will be released.

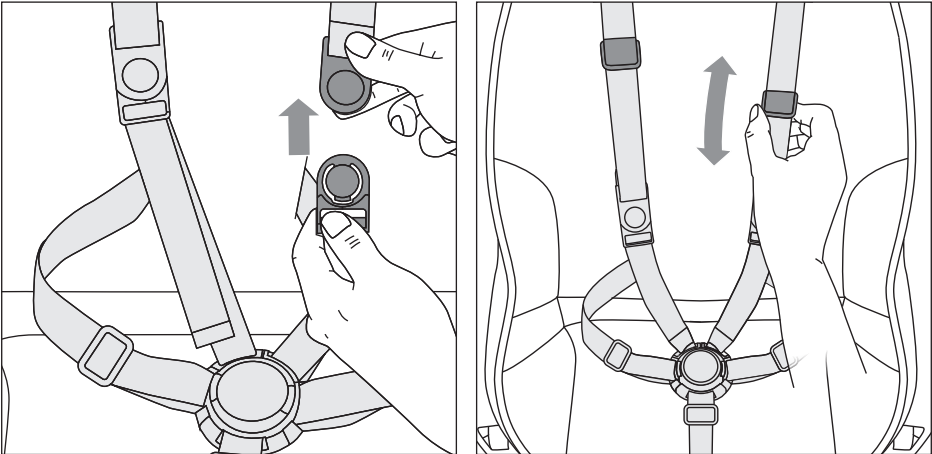




The four remaining sections of the buckle can now be separated.

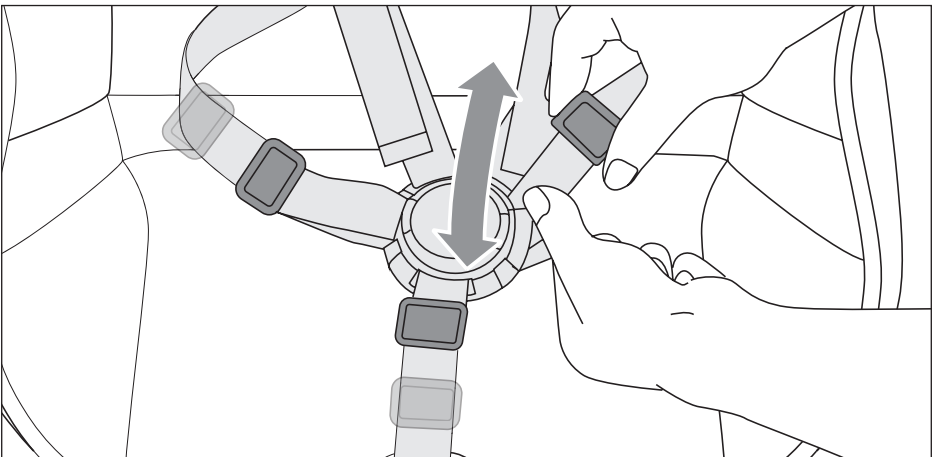
To re-assemble the 5-point magnetic buckle, reverse this process, the magnets in each section will snap together, with the addition of the front cap this creates a very secure buckle.

ADJUSTING THE 5-POINT HARNESS



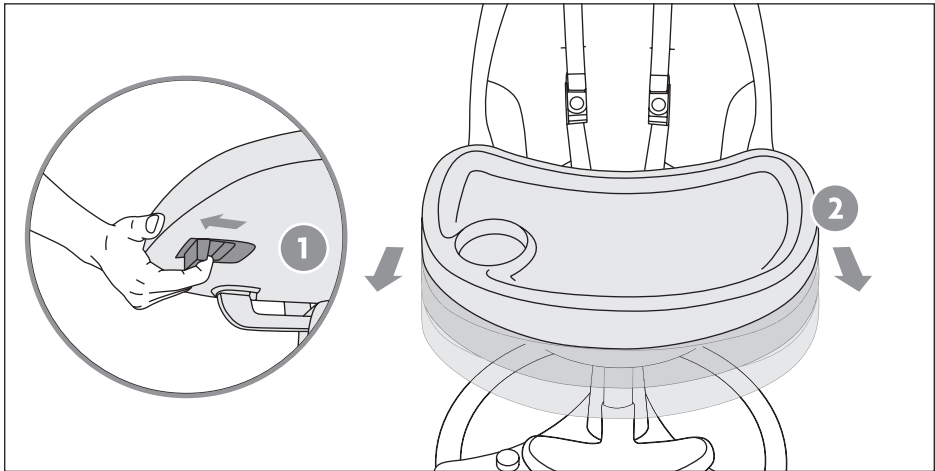
Quick release connectors are provided for the shoulder straps, push the round button on the connector to open, slide the two parts of the connector together to close.

To adjust the height of the shoulder straps to suit your child, hold the adjuster and push up or pull down. Repeat the same on the other side to match.



The harness can be adjusted to suit your child by sliding the adjusters along the shoulder straps and waist belt. The crotch strap can be adjusted to suit your child by sliding the adjuster.

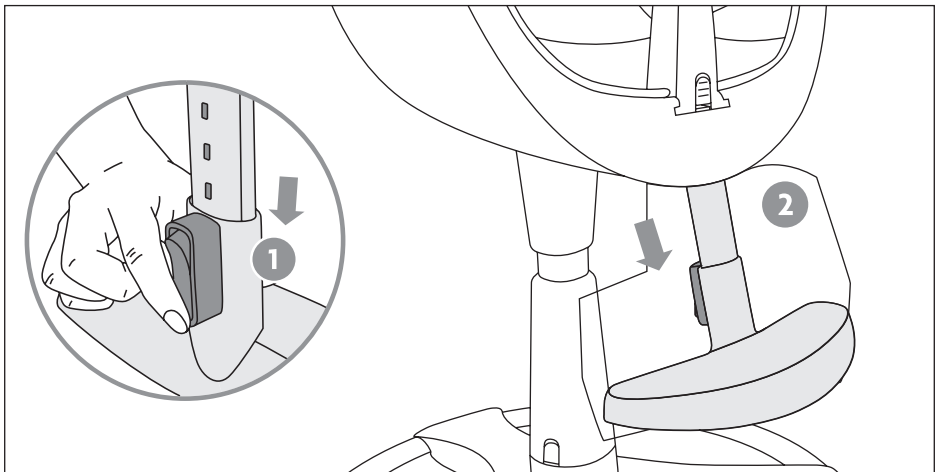
ADJUSTING THE MAIN TRAY



To adjust the position of the main tray, pull the lever under the front of the tray, the tray can now be moved to one of 3 positions.

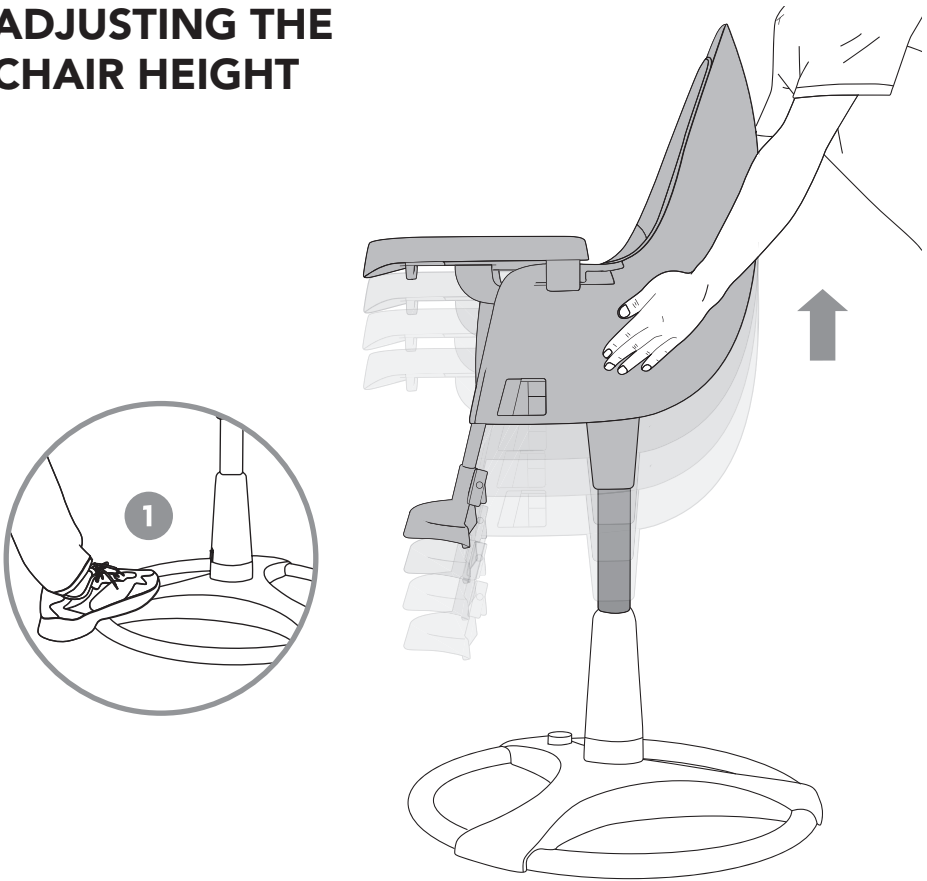
NOTE: if the tray is pulled past position 3, it will detach from the chair.

ADJUSTING THE FOOTREST



To adjust the footrest height, press the button (1), and slide up and down to one of 4 positions (2).

ADJUSTING THE CHAIR HEIGHT



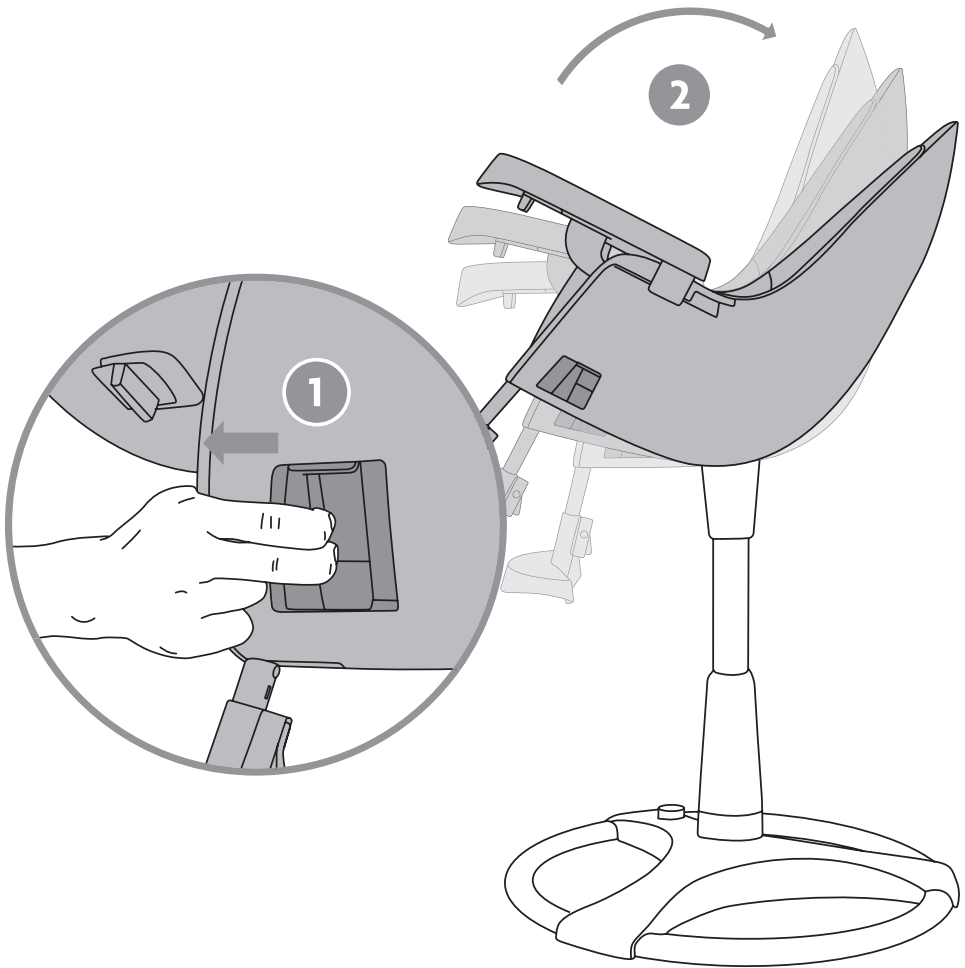
The chair height can be adjusted to four positions, position 1 being the lowest. To adjust to position 2, stand behind the chair, put one foot on the base to steady the highchair (1), hold the chair in both hands and lift until you hear a click.

To choose positions 3 or 4, lift the seat higher until you hear a click for position 3, and higher for position 4.

Once the seat is locked at position 4, you can now return the chair to the lowest position by lifting the chair slightly above position 4, the chair will now freely travel to the lowest position.

NOTE: make sure you hold the chair securely to guide it to the lowest position, do not let the chair fall without your support.

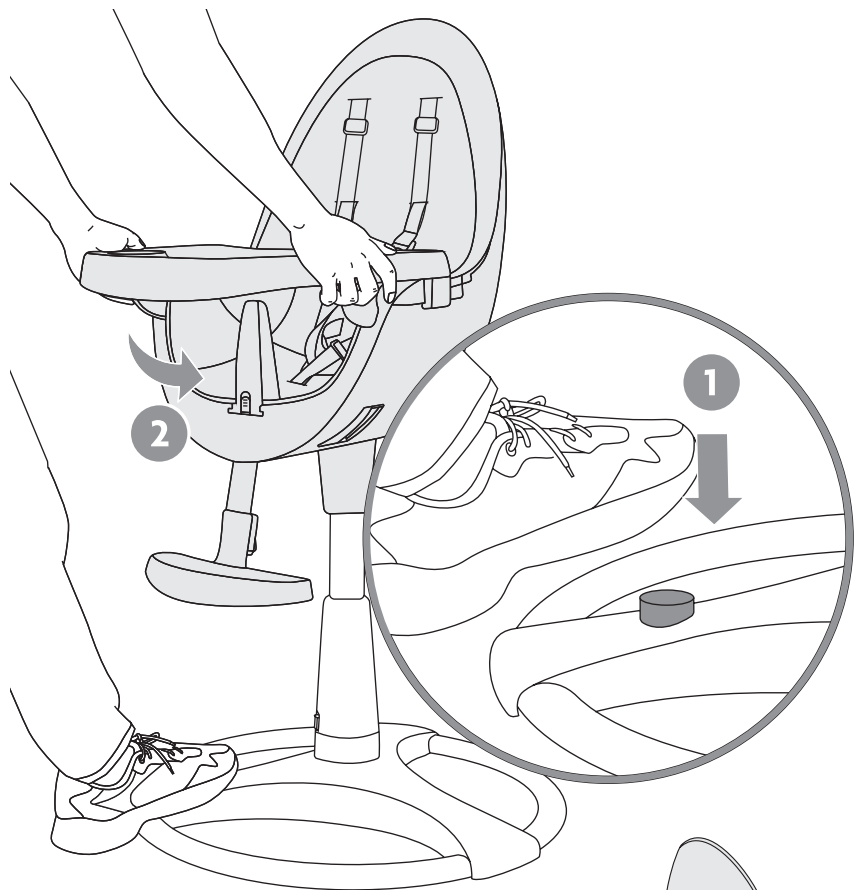
RECLINING THE CHAIR



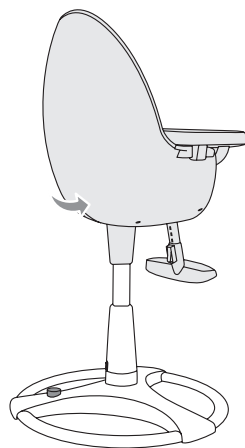
The chair has 3 reclining positions, to change position, stand facing the chair, hold the chair with both hands, pull the lever on the right side (1), the chair can now be set to one of 3 positions (2).

NOTE: the reclining adjustment should not be performed with a child in the chair.

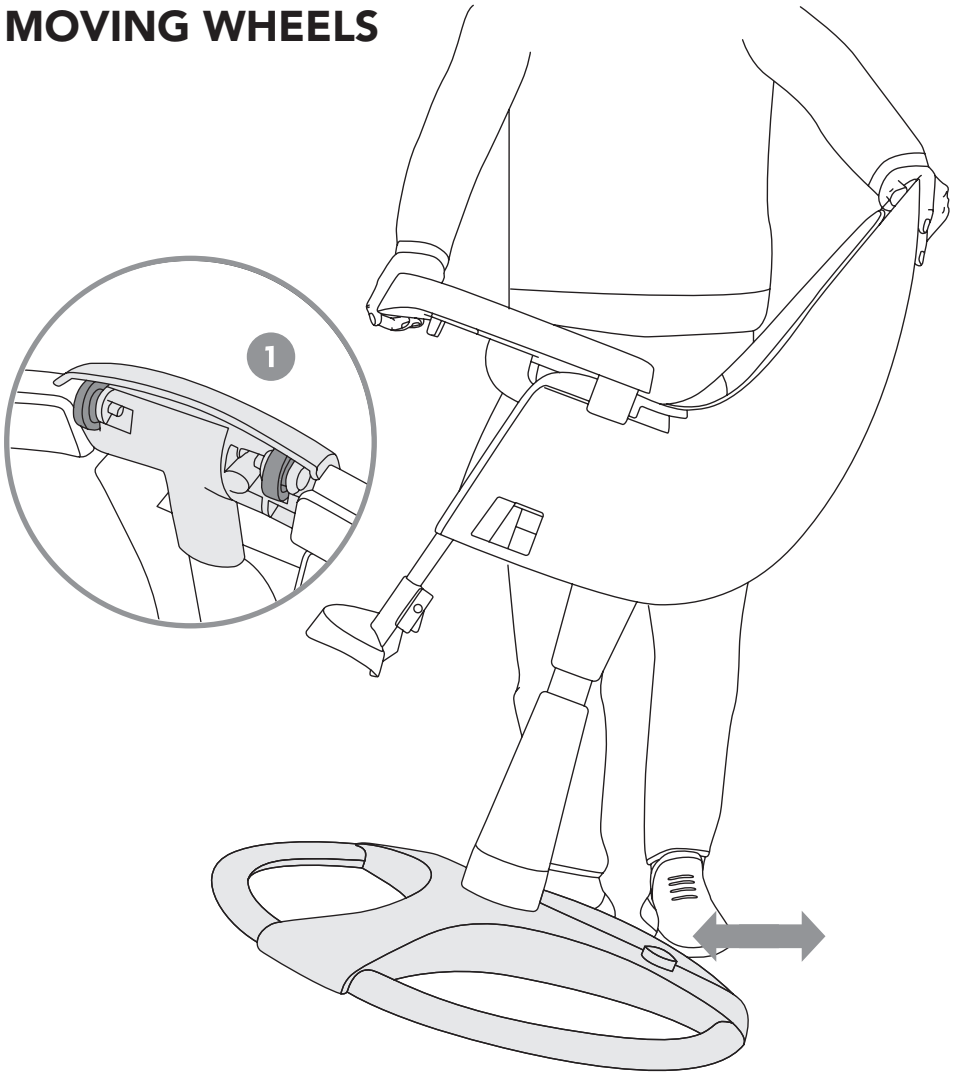
ROTATING THE CHAIR



The chair has 360° of rotation. To rotate the chair, press the button on the base with your foot (1), the chair can now be rotated to one of 4 positions (2).



MOVING WHEELS



Wheels to aid in moving the highchair are located under the edge of the base (1), in alignment with the rotation foot button.

To move the highchair, stand facing the side of the chair, with the foot button positioned towards the rear of the chair, tilt the highchair as shown in the diagram until the weight of the chair is on the wheels, the highchair can now be moved with the aid of the wheels.

CARE AND MAINTENANCE

- Clean fabrics with a damp cloth and mild detergent, and dry thoroughly.
- Clean base and chair frame with a damp cloth and mild detergent, and dry thoroughly.
- To prolong the life of your nursery product, keep it clean and do not leave in the direct sunlight for extended periods of time.
- Do not use abrasive cleaners. Do not soak in water.
- Always store your product in a clean dry place.
- Do not leave in the boot of car.
- Avoid exposure to salt water, as this may encourage the formation of rust. If product is used in this environment completely clean your product afterward to remove sand and salt from mechanisms.
- Should parts become stiff, squeak or difficult to operate ensure dirt is not the cause.
- When storing product, never stack other items on top of it, this may damage the highchair.
- Product intended for indoor use only.
- Do not dry clean or use bleach.
- In some climates the parts may be affected by mould and mildew. To help prevent this occurring, do not fold or store the product if it is damp or wet. Always store the product in a well ventilated area.
- Always check parts regularly for tightness of screws, nuts and other fasteners, tighten if required. To maintain the safety of your nursery product, seek prompt repairs for bent, torn, worn or broken parts.
- Use only parts and accessories approved by the supplier.

WARRANTY POLICY

KEEP YOUR ORIGINAL RECEIPT OF PURCHASE SAFE WITH YOUR WARRANTY INFORMATION

It will be required should you unfortunately find a defect. The receipt must show the date of purchase clearly. In the first instance you must contact the original place of purchase. Exchanging or returning the product cannot be requested. Repairs to any part of this product do not extend the warranty period. Do not return your product direct to the manufacturer.

DISCLAIMER

Whilst we believe the information set out in this instruction manual to be correct and reliable at the time of print, we do not accept responsibility for its accuracy and we shall not be liable for its interpretation and its use. We reserve the right to change, modify, add or delete product specifications at any time without prior notice.

YOUR WARRANTY POLICY

At BabyStyle, we guarantee your product has been manufactured in accordance with all current European safety standards which are applicable to this product, and that this product is free from any defects in workmanship and material at the time of purchase. During the production process this product has gone through rigorous quality checks. Despite our efforts, if this product does show a manufacturing or material defect within the 24 months warranty period for the frame and 6 months for the fabrics we will comply to the warranty terms and conditions providing the product has been used for normal use as described within the instruction manual and it has been maintained correctly as described in the instruction manual, for further information please contact the place of purchase. Please retain your original receipt of purchase safely.

WARRANTY TERMS

- Highchair: 24 consecutive months.
- Fabrics: 6 consecutive months.
- The warranty only applies to the original purchaser and is non-transferable.

The warranty will be invalidated in the following circumstances:

- The product has not been used for its purpose other than described within the instruction manual.
- If the product is returned for repair through a dealer not authorised by us.
- If the original receipt of purchase cannot be provided.
- If the defect is as a result of improper use or incorrect maintenance, negligence or impact damage.
- If the parts show normal wear and tear that may be expected from daily use of the product.
- The warranty of this product becomes valid from the date of purchase as stated on the original receipt of purchase. This does not affect your statutory rights.

Register your product today at babystyledirect.co.uk.

or scan the QR code below



We are proudly
part of the



bpia.co.uk



36 Charles Street, Sileby,
Leicestershire LE12 7RJ.

T: 01509 816444

E: info@eggstroller.com
eggstroller.com

©BabyStyle UK Ltd 2024
RP1324 09122024v2