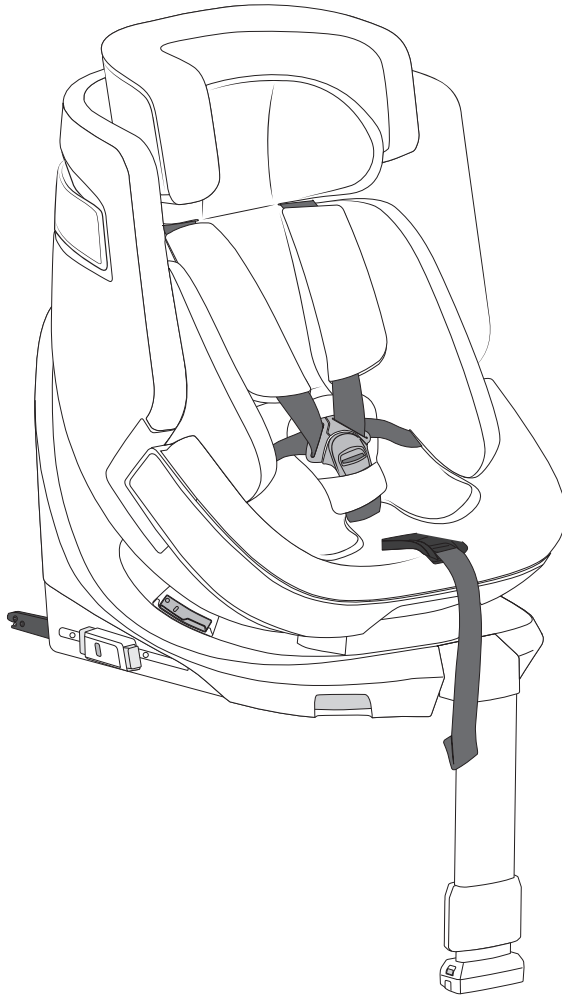


# Oyster

TODDLER 360 CAR SEAT  
& 360 ISOFIX BASE



**INSTRUCTION MANUAL**



## **CONTENTS**

- 4 Important Safety Information
- 6 Oyster Toddler 360 car seat overview
- 8 Support leg unfolding / folding
- 9 ISOFIX adjustment
- 9 Installation direction switch
- 10 Installing the Toddler 360 on 360 ISOFIX base
- 10 Removing the Toddler 360 from the base
- 11 Seat rotation
- 11 Headrest adjustment
- 12 Recline adjustment
- 12 Side protection wings adjustment
- 13 Harness adjustment
- 14 ECRS installation
- 15 Fabric cleaning
- 16 Using guide in vehicles
- 17 Care and maintenance
- 18 Warranty policy

## SAFETY INFORMATION

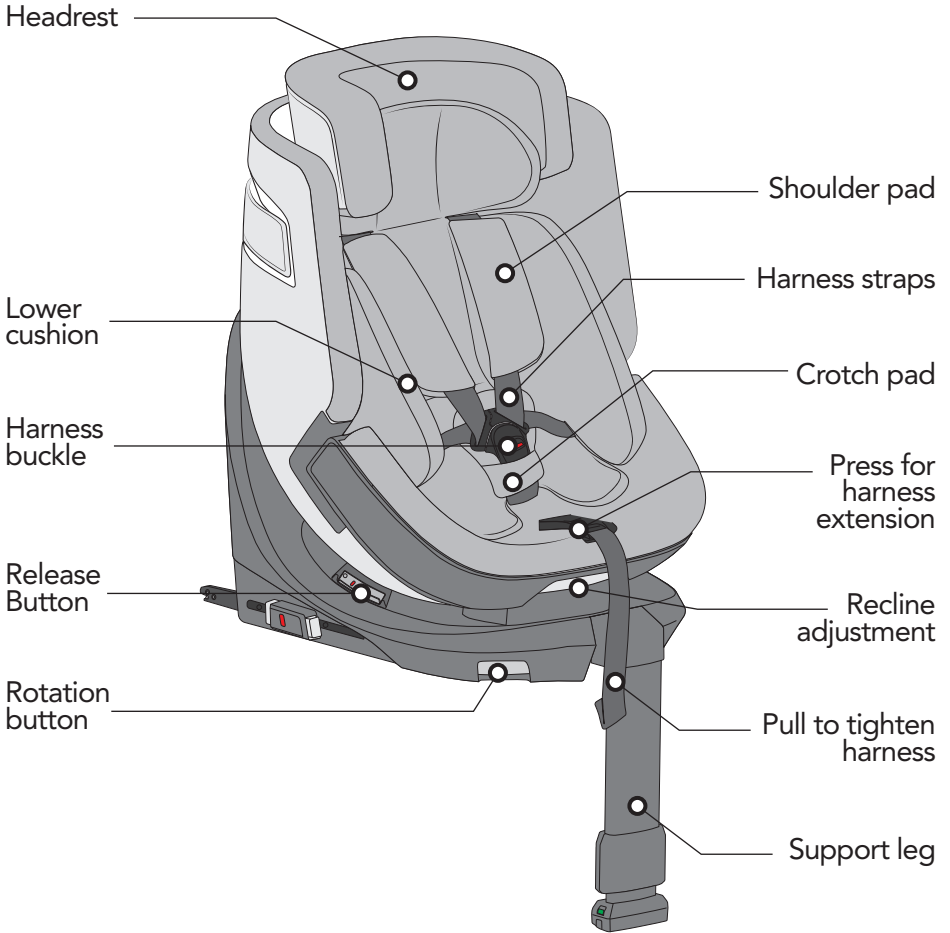
1. For this child restraint system you should also refer to the vehicle manufacturer's handbook.
2. This child restraint system must only be used with the integral harness. It is suitable for children up a stature of 105cm. Never overload the child seat with more than one child or with other loads.
3. **DO NOT** place rear-facing child seat on front seat with airbag.
4. Any straps securing the restraint to the vehicle should be tight, any support leg should be in contact with the vehicle floor, any straps or impact shields restraining the child should be adjusted to the child's body, and no straps shall be twisted.
5. It is important to ensure that any lap strap is worn low down, and that any impact shield is installed properly, so that the pelvis is firmly engaged.
6. The child restraint system should be replaced when it has been subject to violent stresses in an accident.
7. Do not make alterations or additions to the child restraint, it may affect the child's safety and could be dangerous. Follow closely the installation instructions provided by the child restraint manufacturer.
8. The child restraint can become hot when exposed to sunlight, exercise caution, the seat may be too hot for the child's skin.
9. Children should never be left unattended in this child restraint.
10. Any luggage or other objects liable to cause injuries in the event of a collision shall be properly secured.

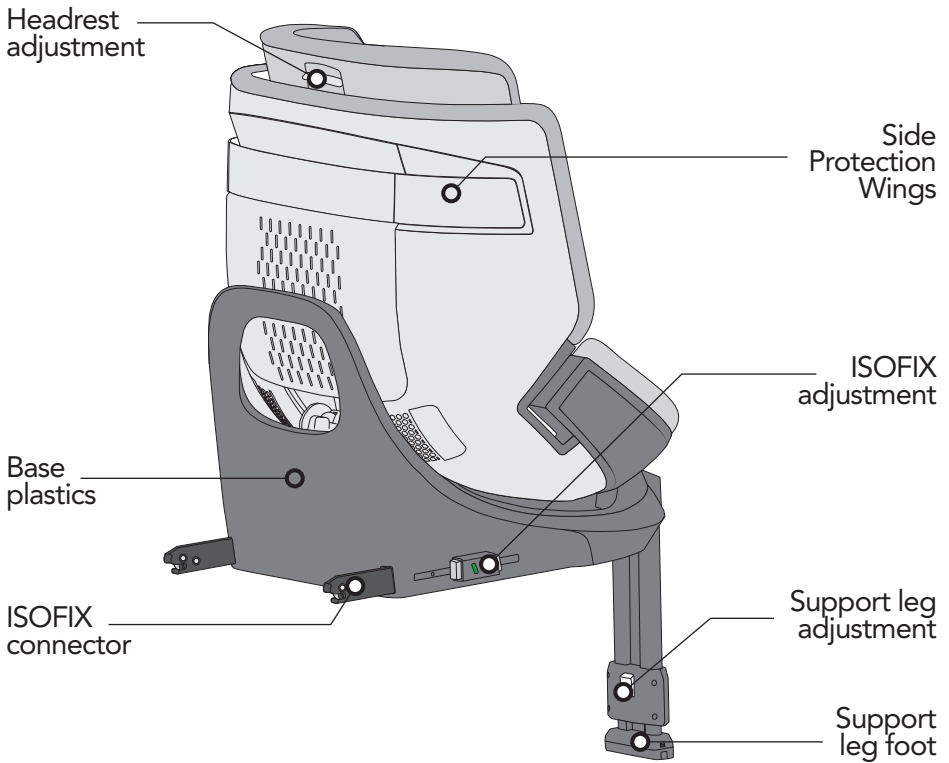
## SAFETY INFORMATION

11. The child restraint shall not be used without the cover; And the seat cover should not be replaced with any other than the one recommended by the manufacturer, because the cover constitutes an integral part of the restraint performance.
12. These instructions should be retained for future reference for the life of the product.
13. Don't use any load bearing contact points other than those described in the instructions and marked in the child restraint.
14. Ensure the harness buckle is completely locked and easily accessible to enable rapid removal of the child in an emergency.
15. Rigid and plastic parts of this child restraint shall be so located and installed that they are not liable, during everyday use of the vehicle, to become trapped by a movable seat or in a door of the vehicle.
16. This child restraint should be kept away from any corrosive materials/items.
17. We guarantee this products quality from new, second-hand products are excluded, the guarantee is not transferrable. Using a second-hand child restraint could be dangerous to your child's safety.
18. Please contact our service hotline if you have any question about the use and installation of the child restraint system.

**WARNING** - Do not use forward facing before the child's age exceeds 15 months.

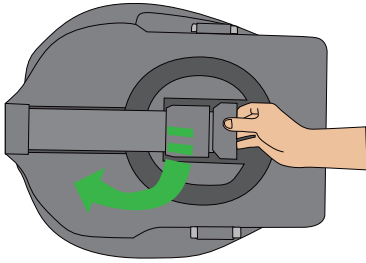
# OYSTER TODDLER 360 CAR SEAT OVERVIEW



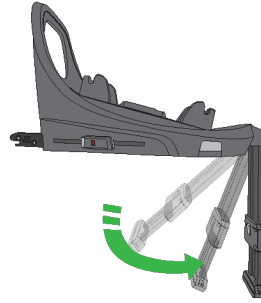


The illustrations in this manual are used to demonstrate the operation of the product. Where there are small differences between the physical object and the illustrations, the physical object shall prevail.

# SUPPORT LEG UNFOLDING

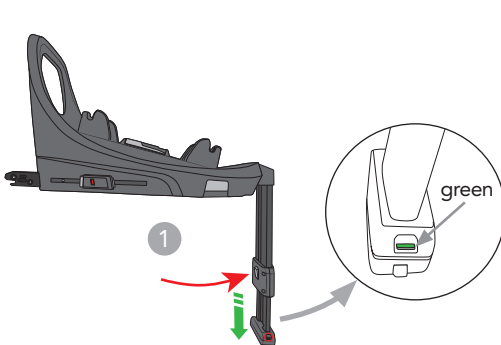


Pull out the leg from the bottom of the seat.

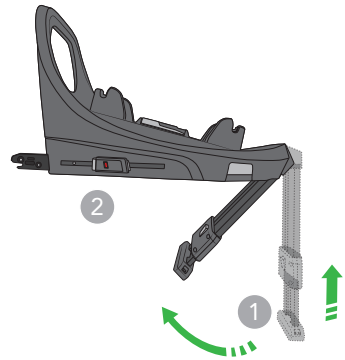


Pull the leg to the maximum angle.

# SUPPORT LEG FOLDING

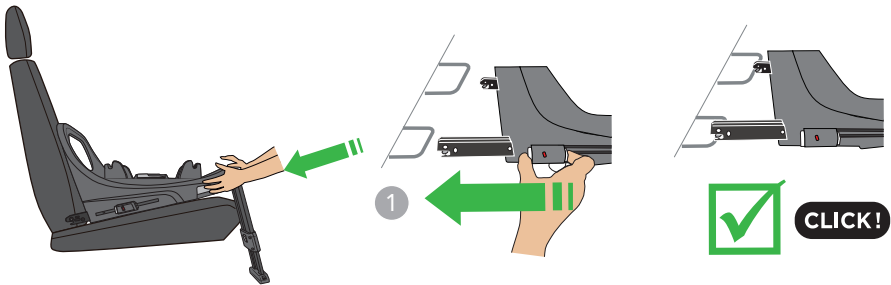


Press the button on the back of the leg joint (1), extend lower leg until it rests on the floor of the footwell, the indicator should show green when correctly positioned.



(1) Press the button on the back of the leg joint, and retract lower leg to the top position, (2) fold the leg up into place on the bottom of the base until you hear a "click".

## ISOFIX ADJUSTMENT

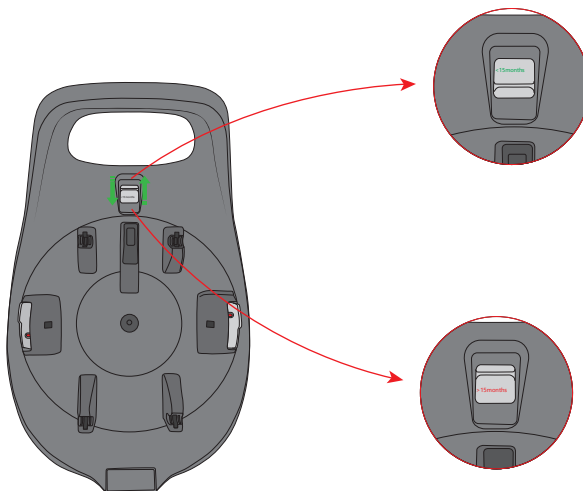


(1) Press the left and the right button of the ISOFIX adjustment, push out the ISOFIX connectors to the maximum extension.

Line up with the vehicle's ISOFIX anchor points, push the connectors together until you hear a "Click", the ISOFIX indicators should now show green. Push the base until it touches the back of vehicle seat.

To disconnect the ISOFIX base, press the left and the right buttons of the ISOFIX adjusters, pull the base away from the vehicle's seat.

## INSTALLATION DIRECTION SWITCH

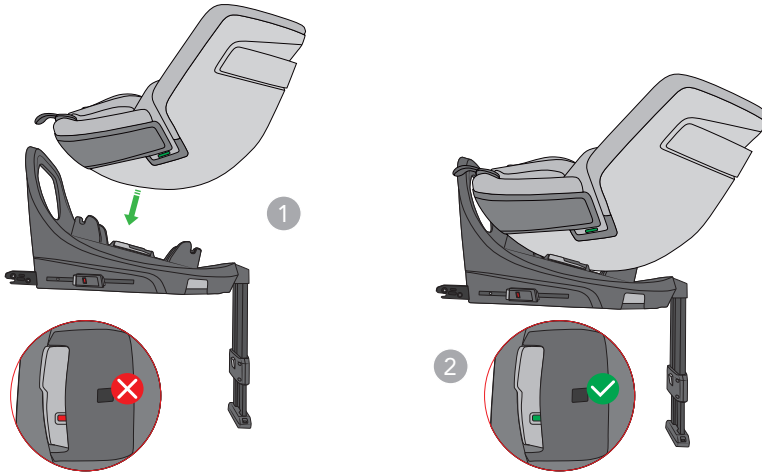


Keep the light grey switch at <15 months position, so that seat can not be installed in the forward direction.

>15 months, the switch can be changed so the seat can be installed in the forward facing position.

# INSTALLING THE TODDLER 360 ON THE 360 ISOFIX BASE

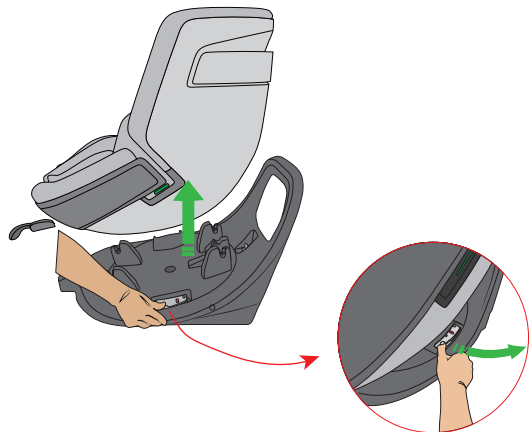
**WARNING:** Lower the seat onto the base. If the car seat is fitted correctly, the indicator colour will change from red to green.



(1) Attach the seat on the base with a "Click". (2) The indicator should now show green when correctly attached.

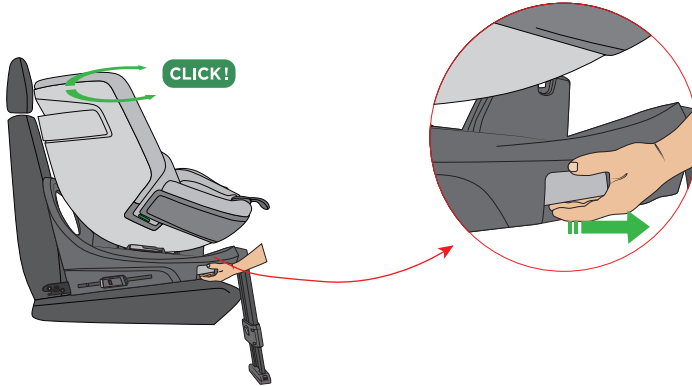
# REMOVING THE TODDLER 360 FROM THE 360 ISOFIX BASE

Pull the left or right release levers and lift the seat from the base.



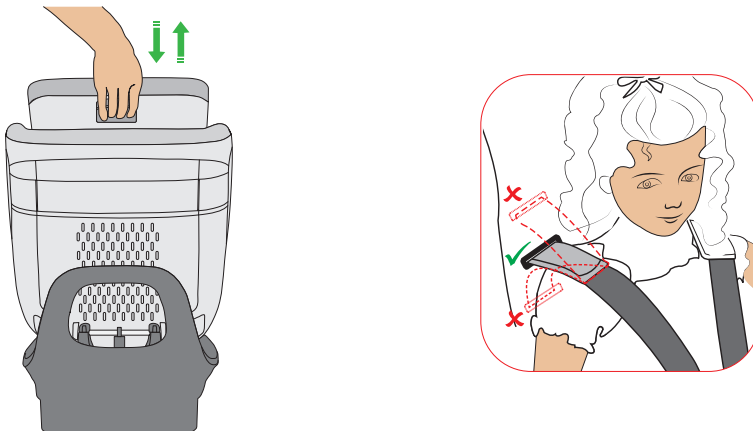
**WARNING:** If there is any under floor storage in the area where the support leg touches down. Do not use the ISOFIX base in this position.

## SEAT ROTATION



Pull the rotation lever to the maximum position, rotate the seat to the desired position. The seat will lock automatically when rearward or forward facing.

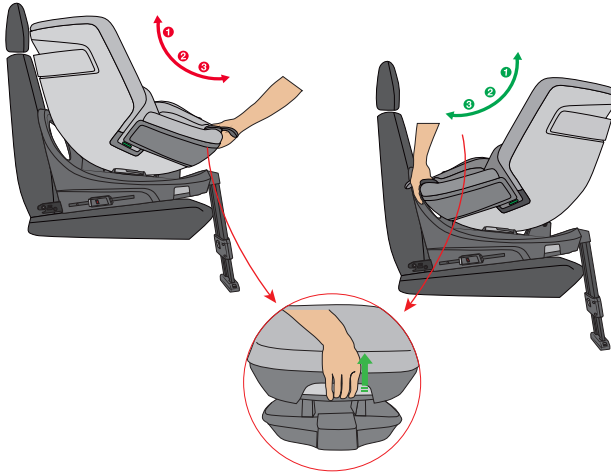
## HEADREST ADJUSTMENT



Using the lever at the back of the headrest, move the headrest up or down to the desired position.

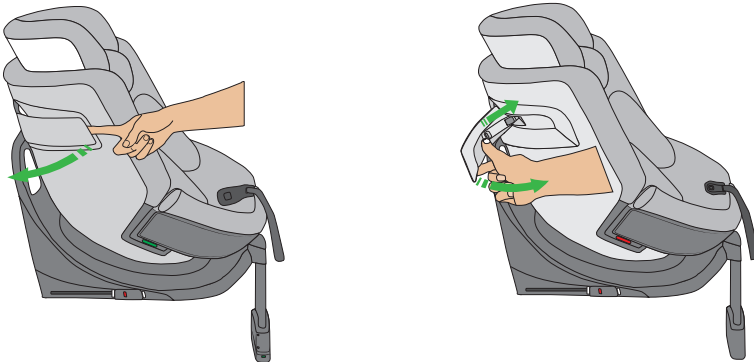
Set the shoulder pads to hold the child's shoulder closely in horizontal position. This is achieved by adjusting the headrest.

## RECLINE ADJUSTMENT



Pull the recline lever under the front of the seat in order to recline the seat into any one of the three positions.

## SIDE PROTECTION WINGS ADJUSTMENT

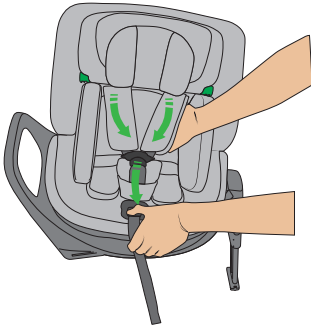


Pull the wing open to adjust the side protection.

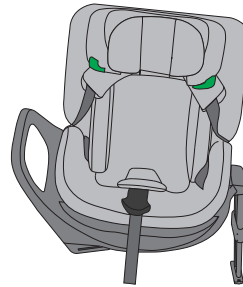
Push the button and pull back the wing to close it.

**WARNING:** Only open the wing close to your car door, and keep the another one closed during the journey.

## HARNESS ADJUSTMENT

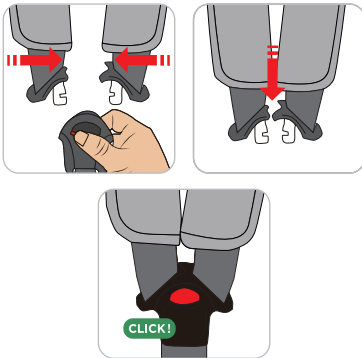


To loosen the harness, hold the centre adjustment button and loosen by pulling the straps simultaneously.



Press the red button on the buckle to open it, separate the harness straps with shoulder pads to the side positions before placing the child in the seat.

**WARNING:** The seat position with 90° angle between seat and base can't be used unless vehicle stopped.



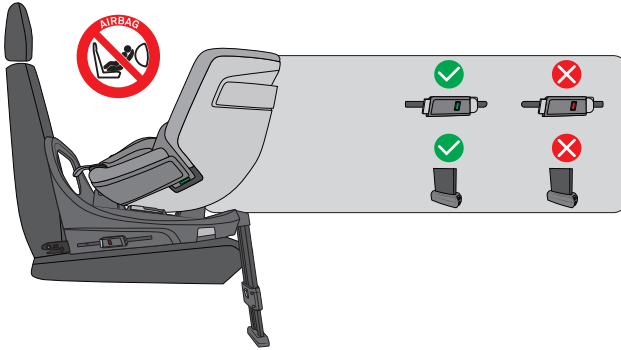
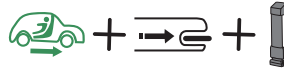
To secure the harness, first connect the shoulder pad straps together, then push them into the buckle with a click.



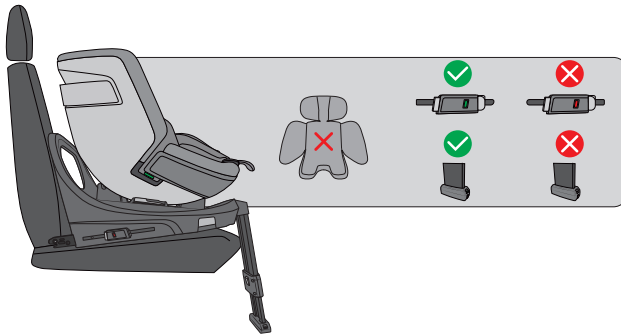
Pull on the strap to secure the child firmly in the harness.

# ECRS INSTALLATION

40-76cm, (Weight birth-18kg);  
Rearward facing installation



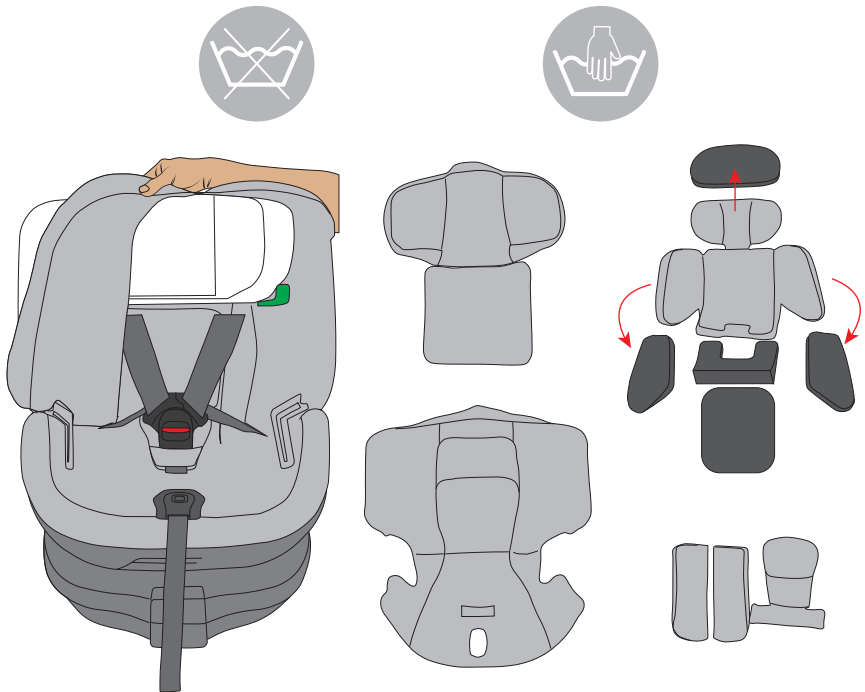
76-105cm (Weight: 9kg-18kg)  
Forward facing installation



**WARNING:** Do not use this car seat in any seating positions where a frontal airbag is activated. An active airbag may cause death or serious injury during an accident.

## FABRIC CLEANING

The cover and the belt can be sponge cleaned with lukewarm soapy water. The plastic parts can be cleaned with a mild detergent and warm water, do not use aggressive cleaning agents. Where individual items are provided with care labels follow the specific guidelines on the label.



## CARE AND MAINTENANCE

**ADVICE:** Seek fitting guidance from your local retailer who can offer expert advice.

Check the car seat regularly to make sure no parts are damaged/torn/broken etc. This car seat is only safe for use if all parts are in good working order. Contact your retailer if you have concerns or require replacement parts.

Avoid leaving the car seat in direct sunlight either in the vehicle or outside, even normal exposure to sunlight can cause the colour of the fabric to change. Cover the car seat when left in direct sunlight. Plastic and metal parts can become hot as vehicles naturally experience very high temperature fluctuations, be aware and use caution on hot days.



**DO NOT** use this CRS in the seating positions where the frontal airbag is activated.

# WARRANTY POLICY

## KEEP YOUR ORIGINAL RECEIPT OF PURCHASE SAFE WITH YOUR WARRANTY INFORMATION

### Your Oyster Warranty

At Oyster we pride ourselves in producing and delivering high quality products with our customers safety and wellbeing at the forefront of our minds.

### Date of effect.

The warranty of this product becomes valid from the date of purchase as stated on the original receipt of purchase. This does not affect your statutory rights.

### Registering your Oyster product

Thank you for purchasing an Oyster product. To activate your warranty and register your product visit <https://babystyledirect.co.uk/register-product/> to complete the registration online.

We are proudly  
part of the



[bpia.co.uk](http://bpia.co.uk)

## WARRANTY POLICY

At Oyster, we guarantee your product has been manufactured in accordance with all current European safety standards which are applicable to this product, and that the product is free from defects in workmanship and material at the time of purchase.

During the production process this product has gone through rigorous quality checks. Despite our efforts, if this product does show manufacturing or material defect within the 24 consecutive months warranty period we will comply with the warranty terms and conditions providing the product has been used for normal use as described within the instruction manual and it has been serviced and maintained correctly also described in the instruction manual.

For further information please contact the place of purchase. Please retain your original receipt of purchase as it will be required should you need to use your warranty. The warranty (24 consecutive months) only applies to the original purchaser and is non-transferable.

The warranty will be invalidated in the following circumstances:

A - This product has not been used for its purpose other than described within the instruction manual.

B - The product is returned for repair through a dealer which is not authorised by Oyster.

C - If the defect is a result of improper use or incorrect maintenance, negligence or impact damage.

D - If the original receipt of purchase cannot be provided.

E - If the parts show normal wear that may be expected from regular use of the product.

# Oyster

36 Charles Street, Sileby,  
Leicestershire LE12 7RJ.

T: 01509 816444

E: [info@babystyle.co.uk](mailto:info@babystyle.co.uk)

©BabyStyle UK Ltd 2025  
JG1122231225