

CHILD INFORMATION
(KEEP WITH CAR SEAT AT ALL TIMES IN CASE OF EMERGENCY)

NAME:

DATE OF BIRTH (DD/MM/YYYY):

ADDRESS:

ALLERGIES/MEDICAL CONDITIONS:

EMERGENCY CONTACT 1:

NAME:

PHONE NUMBER:

EMERGENCY CONTACT 2:

NAME:

PHONE NUMBER:

Cozy N Safe

UNIT 25 PEDMORE ROAD INDUSTRIAL ESTATE,
PEDMORE ROAD, BRIERLEY HILL,
WEST MIDLANDS, DY5 1TJ

Tel: +44 (0) 1902 494905

Email: enq@cozynsafe.com

EU Authorized Representative:

Authorized Representative service
EURO STOCK VENTURE TRADERS LTD
UNIT 1, 3 O'CONNELL SQUARE,
EDENDERRY, CO. OFFALY, R45 YR13 Republic of Ireland

COZY  SAFE®
Without Compromise...
CYGNUS i-Size

COZY  SAFE®
Without Compromise...
CYGNUS i-Size

User Manual

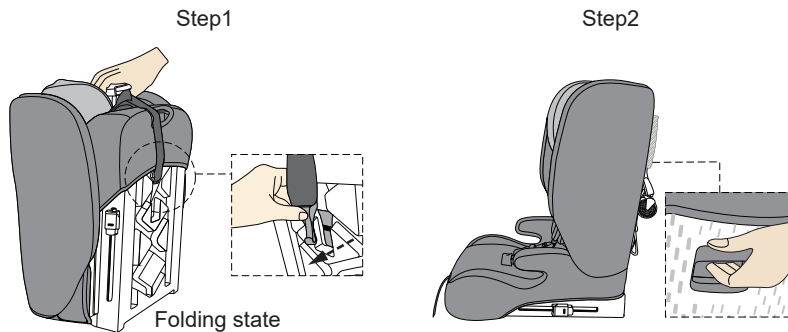
Height: 76 - 150 cm

Please read this manual carefully before use.

 i-Size

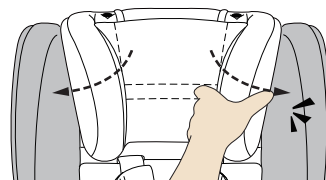


If the seat is folded when you open the package,
please install the seat according to the operating instructions.



Step 1: First, undo the top tether hook from the bottom of the seat.
Step 2: Then pull the adjuster behind the seat back, open the backrest to an upright position until you hear a "click" sound.

Step3



Step 3: Finally, When opening the headrest on both sides, simply open them outward and you will hear a "click" sound.

* If you need to store the child seat, please follow the above steps in reverse.

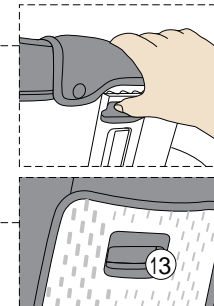
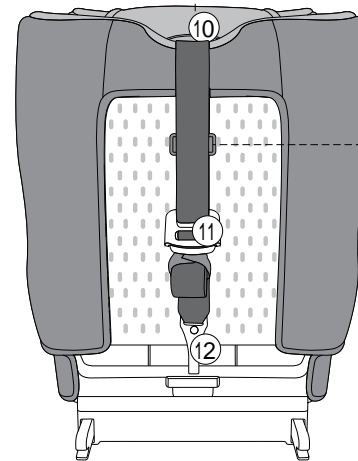
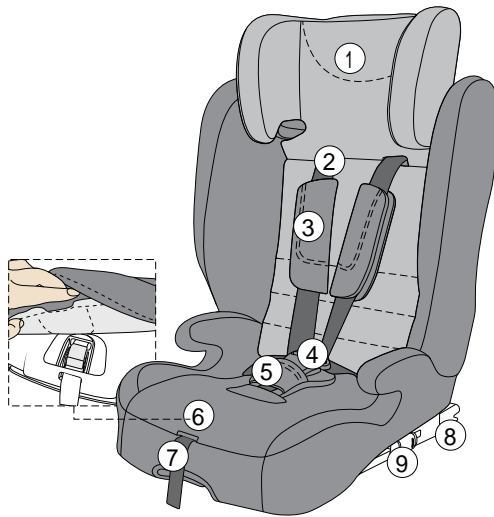
01	PRODUCT OVERVIEW	-----	01-02
02	SAFETY WARNING	-----	03-06
03	USAGE		
3.1	Install position of the child seat in vehicle	-----	08
3.2	Adjust the headrest	-----	09
3.3	Usage of buckle	-----	10
3.4	How to adjust the harness	-----	11
3.5	Adjust the ISOFIX attachments	-----	12
3.6	Top Tether adjustment	-----	13
3.7	Headrest opening / folding method	-----	14
3.8	Adjust seat backrest	-----	15
3.9	Remove the harness in 100-150cm	-----	16
04	INSTALLATION		
4.1	Installation forward-facing (Height: 76-105cm)	-----	18
4.2	Installation forward-facing (Height: 100-150cm)	-----	19-20
05	MAINTENANCE AND CLEANING		
5.1	Daily maintenance	-----	22
5.2	Washing instruction	-----	22

01

PRODUCT OVERVIEW

Product overview

- ① Headrest
- ② Harness
- ③ Shoulder pads
- ④ Buckle
- ⑤ Crotch pad
- ⑥ Adjuster button
- ⑦ Harness adjuster strap
- ⑧ ISOFIX attachment
- ⑨ ISOFIX release button



- ⑩ Headrest adjustment handle
- ⑪ Top tether release button
- ⑫ Top tether hook
- ⑬ The backrest button

02

SAFETY WARNING

Safety warning

- Cygnus folding can be used forward-facing by 5-point safety system for a child with a height of 76-105cm (Weight: 9-18kg), using ISOFIX+Top tether to fix the child restraint system;
- Cygnus folding also can be used forward-facing for a child with a height of 100-150cm (Weight: 15-36kg), using adult three-point belt to fix the child restraint system, or using ISOFIX and adult three-point belt together to fix the child restraint system;
- Do not use any load bearing contact points other than those described in the instructions and marked in the child restraint when in 100-150cm;
- In order to keep for future reference, the instruction manual should be stored in the back bag of the headrest cloth cover.
- Do not use this child seat at home. It has not been designed for home use and should only be used in your car;
- For the reason of safety, the child seat must be fixed inside the vehicle using ISOFIX anchorages even if you do not put your child inside the child seat;
- The rigid items and plastic parts of a child seat shall be so located and installed that they are liable , during everyday use of the vehicle to become trapped by a moveable seat or in a door of the vehicle;

- Any straps holding the restraint to the vehicle should be tight.
- Any straps restraining the child should be adjusted to the child's body.
- Straps should not be twisted.
- Make sure that any lap strap is worn low down, so that the pelvis is firmly engaged.
- The device should be replaced when it has been subjected to violent stresses in an accident.
- It's dangerous to make any alterations or additions to the device without the approval of the Type Approval Authority, it is also dangerous not to follow closely the installation instructions provided by the manufacturer.
- When the chair is not provided with a textile cover, the chair should be kept away from sunlight, otherwise it may be too hot for the child's skin.
- Do not leave your child in the device unattended.
- Any luggage or other object liable to cause injuries in the event of a collision shall be properly secured.
- The ECRS shall not be used without the cover.
- The seat cover should not be replaced with any other than the one recommended by the manufacturer, because the cover constitutes an integral part of the restraint performance.
- The instructions shall be retained on the device for its life period or in the vehicle handbook in the case of built-in restraints.
- The user shall also be referred to the vehicle manufacturer's handbook.
- Never use a second-hand product, as you can never be certain what has happened to it.

NOTICE

i-Size ECRS Notice

- This is an i-Size Enhanced Child Restraint System. It is approved according to UN Regulation No.129, for use in, i-Size compatible vehicle seating positions as indicated by vehicle manufacturers in the vehicle users' manual.
- If in doubt, consult either the Enhanced Child Restraint System manufacturer or the retailer.

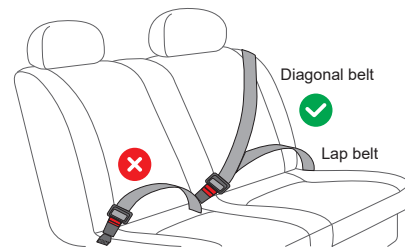
" i - Size booster seat " NOTICE

- This is a i - Size booster seat Enhanced Child Restraint System. It is approved according to UN Regulation No. 129, for use primarily in " i - Size seating positions" as indicated by vehicle manufacturers in the vehicle user's manual.
- If in doubt, consult either the Enhanced Child Restraint System manufacturer or the retailer.

* IMPORTANT-DO NOT use before the child's age exceeds 15 months.(Refer to instructions)

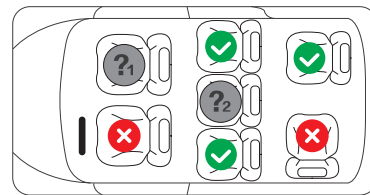
03 USAGE

3.1 Install position of the child seat in vehicle



✓ Proper installation ✗ Improper installation

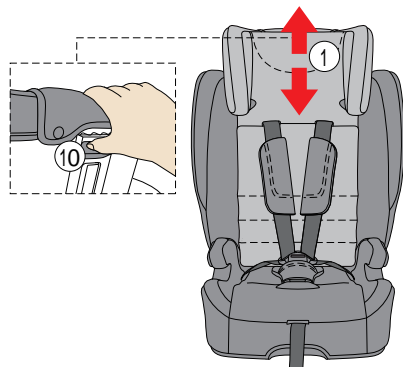
Only suitable if the approved vehicles are fitted with 3 point safety-belt, approved to UN/ECE Regulation No.16 or other equivalent standards.



❓₁ Do not use in seating positions where an active frontal airbag is installed.

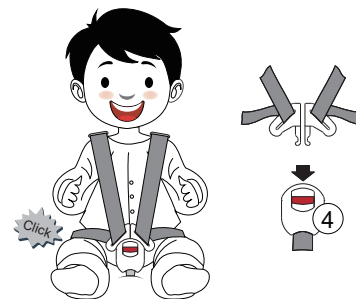
❓₂ Only use on this seat if a lap and diagonal seat belt is fitted.

3.2 Adjust the headrest



As shown in the picture, you can adjust the headrest ① up and down by pulling on the headrest adjustment handle ⑩, and adjust the headrest to a position suitable for the child's head.

3.3 Usage of buckle

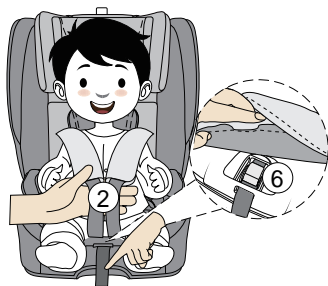


Buckle ④ (sketch map)

- Connect the left and right buckle connectors together.
- Insert the two connectors in the buckle. At the same time, you will hear a 'click' which means the buckle is locked. To ensure this you can pull the connectors to ensure the buckle is locked correctly.

* If you want to release the 5 point harness, it needs to press the red button, then the pieces pop up.

3.4 How to adjust the harness



Loosen the harness (2)

The harness can be slackened by pressing the adjuster (under the seat cover (6)) on the front of the seat. Press and hold down the adjuster as you grip the two harness with your other hand. Pull the harness towards you to loose the harness.

Tighten the harness horizontally

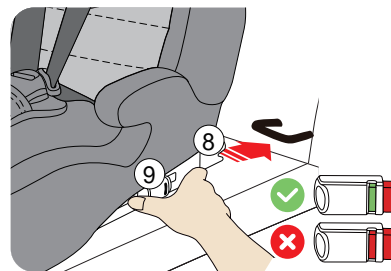
Pull the harness upward to remove the slack from the lap sections of the harness then pull the front stretch belt until the harness adjuster strap (7) is fully tightened.

* The harness should be adjusted as tightly as possible without causing discomfort to your child. A loose harness can be dangerous.

* Check the harness adjuster and tighten each time when the child is placed in the seat.



3.5 Adjust the ISOFIX attachments



The ISOFIX attachments can be adjusted for many positions to fit the different positions of ISOFIX (8) low anchorages extending from car seat.

Press down the release button (9) to adjust ISOFIX attachments of both sides to the longest position.

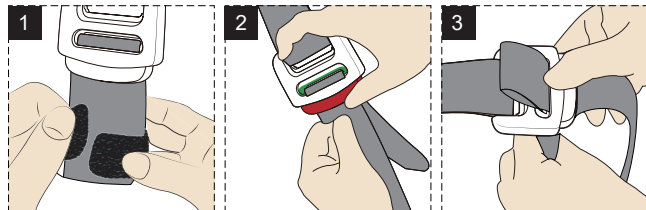
Snap the ISOFIX into the ISOFIX Anchor points, Make sure that you have heard a "click" and the ISOFIX latching indication shows GREEN.

If you want to release the ISOFIX attachments, press the red button. Once the installation of the ISOFIX attachments is finished. Push the red release button of the ISOFIX chuck in the direction as shown, and the ISOFIX chuck will be released.

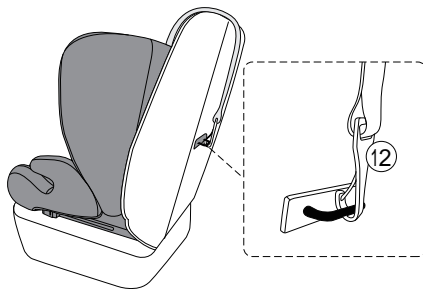


* After attaching the isofix chuck, push the child restraint forwards until it is tight against the car seat. Now, the ISOFIX base is installed in place.

3.6 Top Tether adjustment

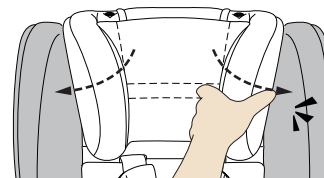


Firstly, gently separate and tear the storage Velcro ;
Secondly, press and hold the button of the top tether adjuster (see 2) and release the top tether to the appropriate length (see 3);

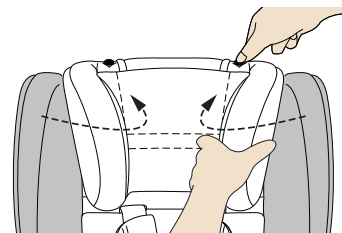


Thirdly, hang the top tether hook ⑫ to the top tether anchorage which is recommended in the vehicle user manual;
Finally, tighten the top tether until the adjustment indicator shows green.

3.7 Headrest opening / folding method



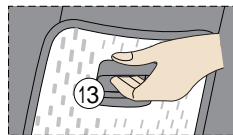
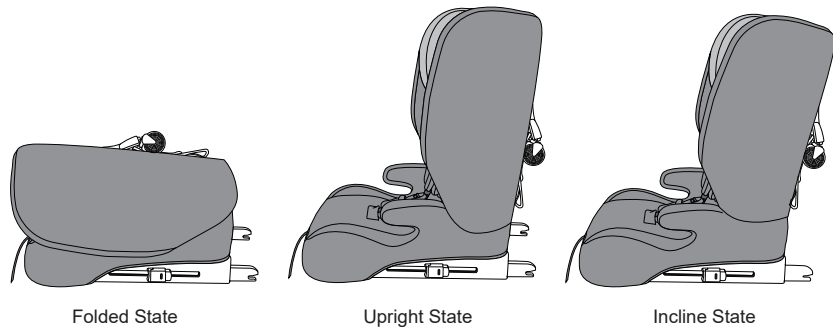
When opening the headrest on both sides, simply open them outward and hear "click" sound.



Press and hold one side button on the top of the headrest to fold it inward. Use the same way to fold the other side headrest.

Note: Press the button all the way down to fold the headrest, Do not use force to operate.

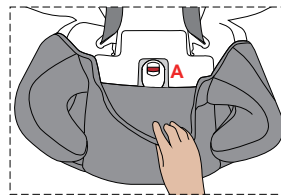
3.8 Adjust seat backrest



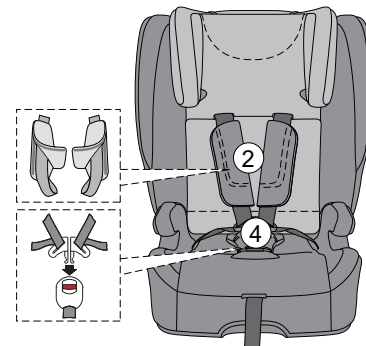
Pull the backrest button (13) behind the seat to adjust three angles. The folded state is for storage, and the upright and incline states are suitable for children to sit.

3.9 Removing the harness for 100-150cm use

- Unfasten the buckle (4) and harness (2) on both sides, and store the buckle in the seat groove A, and then pull out the seat belt and pull out the buckle insert; Pull out the strap with harness from the top and store it properly;



- Finally, make the fabric cover in order and use the seat.

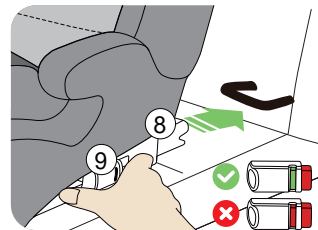


04 INSTALLATION

4.1 Installation forward-facing (Height: 76-105cm)

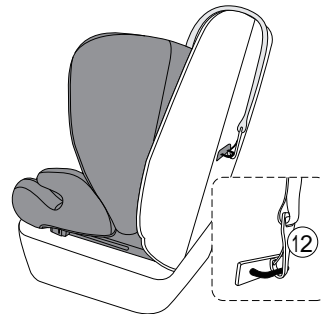


Usage :
ISOFIX+Top tether



Step 1 /

Push ISOFIX (8) on both sides of the base and clip it into the ISOFIX Anchor points. When a "click" is heard, the ISOFIX release button (9) is displayed in green color.



Step 2 /

Pull out the top tether strap to a suitable length, and then fix the top tether hook (12) to the top tether anchorage of the car seat.



Step 3 /

Put the child in the safety seat, and lock the buckle (4), tighten the harness adjuster (7).

4.2 Installation forward-facing (Height: 100-150cm)



Usage :

① ISOFIX + 3 point belt

Shoulder belt

Lap belt



- Push ISOFIX (8) on both sides of the base and clip it into the ISOFIX Anchor points. When a "click" is heard, the ISOFIX release button (9) is displayed in green color.
- Put the child into the safety seat, adjust the headrest (1) up and down according to the height of a child.
- Pull out the adult 3-point belt, clip the vehicle shoulder belt into the belt guide hook of the headrest, and then clip the vehicle shoulder and lap belt together into the belt guide slot on the side of the seat.



The lap belt on the other side should also pass under the armrest.



Usage :

② only 3 point belt

- Put the child into the safety seat, adjust the headrest (1) up and down according to the height of a child.
- Pull out the adult 3-point belt, clip the vehicle shoulder belt into the belt guide hook of the headrest, and then clip the vehicle shoulder and lap belt together into the belt guide slot on the side of the seat.



* When using, it should be confirmed that the buckle of the adult 3-point belt does not interfere with the main load-bearing contact point of the child restraint system. If in doubt, please contact the manufacturer of the child restraint system.



05

MAINTENANCE AND CLEANING

5.1 Daily maintenance

- In daily use, check the child seat periodically. The child seat should be replaced after an accident.
- Please keep this child seat in dry and ventilated place to avoid dampness and mold.
- If the child seat becomes dusty, clean the seat belt and the plastic pieces by swiping them with a damp sponge and let it dry under ambience.
- If food or drink drops accidentally on the buckle, disassemble the seat belt from the child seat and rinse it gently by warm water. Leave it dry under ambience naturally.
- For cleaning the entire child seat fabric cover, please refer to the 5.2 washing instruction.

5.2 Washing instructions

* Never use any solvent, chemical detergent or lubricant on any part of your child seat.



Hand wash, water
temperature
below 30 °C



Do not bleach



Dry clean, any
solvent except
trichloroethylene.



Do not tumble dry



Do not iron